

The Druary

at Cloverleaf



The Druary 4-3

4 Bed - 3 Bath

2397 sqft

Exterior:

High Quality Exterior
Low Maintenance Hardie Lap & Masonry Brick
30-Year Dimensional Architectural Roof Shingles & Metal Roof
Covered Back Porch with vented vinyl ceiling
Exposed Rafter Tails
Single Hung, Double Pane High Efficiency Low E Glass Vinyl Windows
\$5,000 landscaping allowance
2 Car Garage
8x8 Rough Sawn Columns
1x6 Shutters with 1x4 Raised Accents

Building Standards:

Slab on Grade Concrete Foundation
Traditional Stick Framing Methods
Framed "Green Corners" for higher Energy Efficiency

Interior Features:

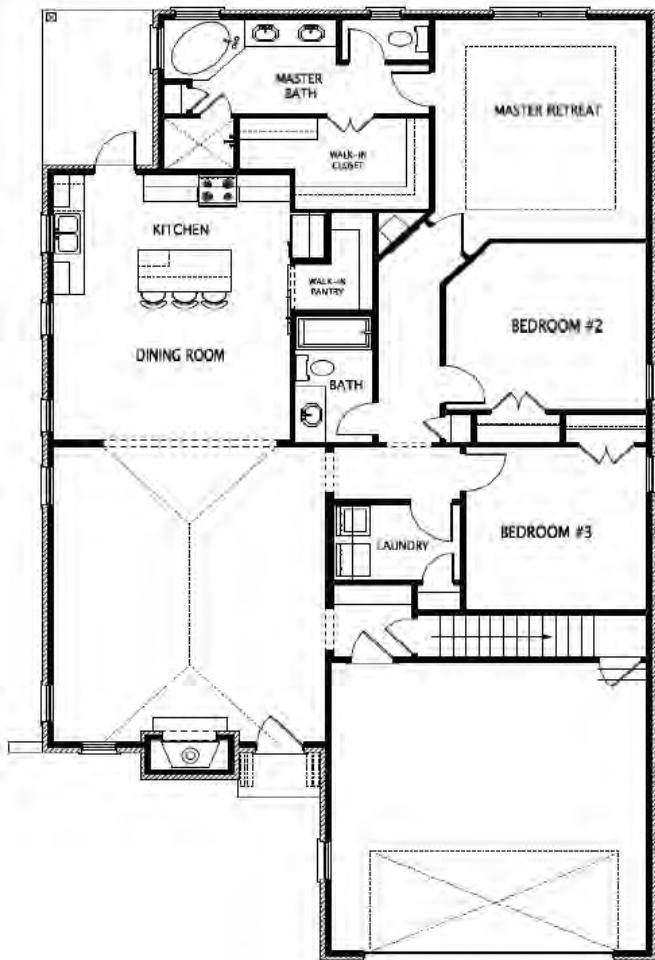
9' Ceilings throughout Main Floor & 8' Ceilings throughout Second Floor
Traditional R13 Batt/Fiberglass Insulation
Open Cell R20 Spray Foam Installed on Roof Deck
Gas Tankless Water Heater
14 SEER Electric Heat Pump

Interior Finishes:

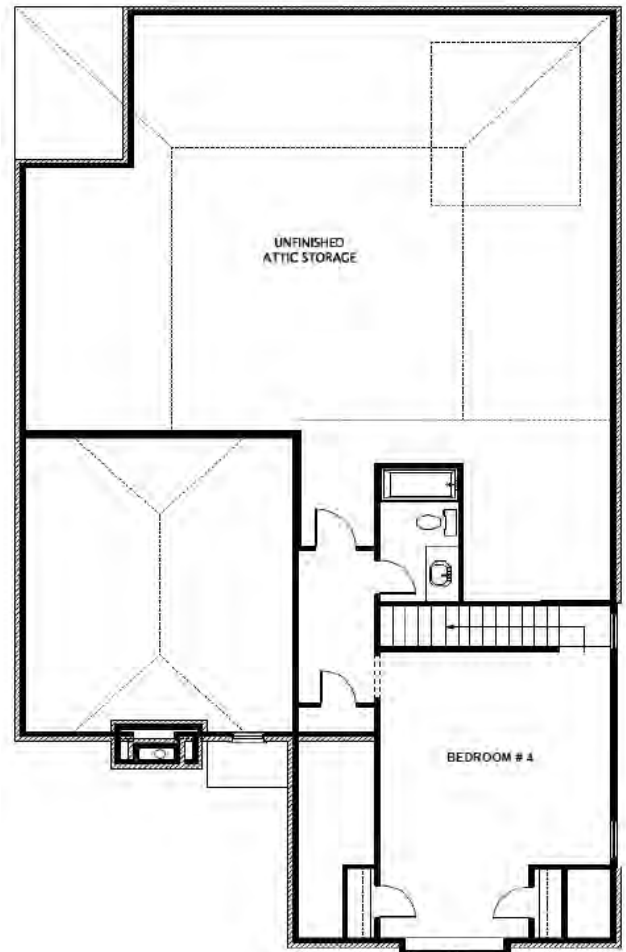
5" Hand Scraped Pre-Engineered Hardwood Flooring in the Common Areas on Main Floor
Carpet in all Bedrooms
Ceramic tile in all Full Bathrooms
Custom Designed Wooden Cabinets in Kitchen & Bathrooms
Granite countertops throughout
Stainless Steel Gas Appliances by Whirlpool®, including the Dishwasher, Gas Range, Microwave, & Wood Vent Hood
Delta® Kitchen and Bath Fixtures
Double Vanity in Master Bathroom with Under-mount sinks
Vanity Mirrors
Schluter Shower system with Delta fixtures & full tile surround with a frameless glass shower door in Master Bathroom
12x20 Niche in Master Shower
Free Standing Tub with Deck Mount Faucet in Master Bathroom
Low Maintenance High Quality Fiberglass Tub/ Shower in Upstairs Bathroom
Recessed Lighting throughout Kitchen, Dining, Living Room, & Master Bedroom
Wire Shelving installed in all Closets, Pantry, & Laundry Areas
Interior walls primed & painted with Sherwin Williams® products. Includes two wall colors, one trim color, & one ceiling color
6" Baseboards throughout
Gas Fireplace
A 5' tall brick surround and hearth will be installed with a cypress 6x12 mantle with corbels. Brick to match exterior brick selection. Hearth will be 12" tall x 12" deep
Judges Paneling on dining room wall with windows
Shiplap above mantle to the ceiling
Barn door to pantry

Upgraded Finish Options:

Under Cabinet Lighting
2" White Faux Wood Blinds throughout
Solid Core Doors throughout \$1,200
Floor Outlet Per Plans
USB Outlet \$1,700
Surround Sound \$450 per
\$50 per
\$3,250
(Includes 5 ceiling speakers, 1 sub woofer (floor standing), 5 channel audio-video receiver/amplifier & 1 Control4 entertainment controller with remote)
Music Package \$1,000 per room
(Includes 2 in ceiling speakers and one zone amp with wireless remote control via smart phone or tablet app, requires WiFi)
Marble Countertops Price Available Upon Request
Heated Tile Floors Price Available Upon Request
Brick Accent Wall Price Available Upon Request



Main Level



Upper Level



"Building Reputations"

www.HollandHomesllc.com

(334) 332-7157



THE ELEVATION AND FLOOR PLANS CONTAINED HEREIN ARE NOT TO SCALE AND ARE GRAPHIC ILLUSTRATIONS FOR MARKETING AND PRESENTATION PURPOSES ONLY. ACTUAL FLOOR PLANS AND ALL MATERIALS MAY VARY PRIOR TO OR DURING CONSTRUCTION. SOME FEATURES SHOWN MAY BE OPTIONAL. HOLLAND HOMES RESERVES THE RIGHT TO SUBSTITUTE MATERIALS AND COMPONENTS OF SIMILAR QUALITY, AND TO CHANGE FEATURES, OPTIONS, AND ARCHITECTURAL DETAILS WITHOUT PRIOR NOTICE. ACCORDINGLY, NEITHER THESE MATERIALS, NOR ANY COMMUNICATION MADE OR GIVEN IN CONNECTION WITH THESE MATERIALS, MAY BE DEEMED TO CONSTITUTE ANY REPRESENTATION OF WARRANTY, CONTRACT OR GUARANTEE OR MAY OTHERWISE BE RELIED UPON BY ANY PERSON OR ENTITY UNLESS CONVEYED IN WRITTEN FORM. THIS MARKETING INFORMATION AND PLAN ARE PROPERTY OF HOLLAND HOMES.